

Population Health Trust Advisory Committee

October 6th, 2016



**POPULATION
HEALTH TRUST**
ADVISORY COMMITTEE

Skagit County Board of Health

Lisa Janicki, Chair

Kenneth A. Dahlstedt, Commissioner

Ron Wesen, Commissioner

Agenda

- Welcome and Introductions
- Review Previous Notes and Approve
- Sneak Preview Data Dashboard-Patrick Jones
- Opioid Update-Randy Elde
- Steering Committee Report-Liz
- Review RWJ Framework Comments
 - Discussion: how to integrate RWJ Framework with our priorities
- November Agenda



Introduction & Welcome:

Heidi Nelson, Molina Health
Stacy Phelps, Upper Skagit
Tribal Health Clinic



**POPULATION
HEALTH TRUST**
ADVISORY COMMITTEE

Skagit County Board of Health

Lisa Janicki, Chair

Kenneth A. Dahlstedt, Commissioner

Ron Wesen, Commissioner

Remembering Terry Belcoe



**POPULATION
HEALTH TRUST**
ADVISORY COMMITTEE

Skagit County Board of Health

Lisa Janicki, Chair

Kenneth A. Dahlstedt, Commissioner

Ron Wesen, Commissioner

Review & Approve Notes



**POPULATION
HEALTH TRUST**
ADVISORY COMMITTEE

Skagit County Board of Health

Lisa Janicki, Chair

Kenneth A. Dahlstedt, Commissioner

Ron Wesen, Commissioner

Patrick Jones Sneak Preview



**POPULATION
HEALTH TRUST**
ADVISORY COMMITTEE

Skagit County Board of Health

Lisa Janicki, Chair

Kenneth A. Dahlstedt, Commissioner

Ron Wesen, Commissioner



**POPULATION
HEALTH TRUST**
ADVISORY COMMITTEE

Skagit County Board of Health

Lisa Janicki, Chair

Kenneth A. Dahlstedt, Commissioner

Ron Wesen, Commissioner

**Opioid Leadership
Workgroup Team
Update, Randy Elde**

**Steering Committee
Update, Liz**



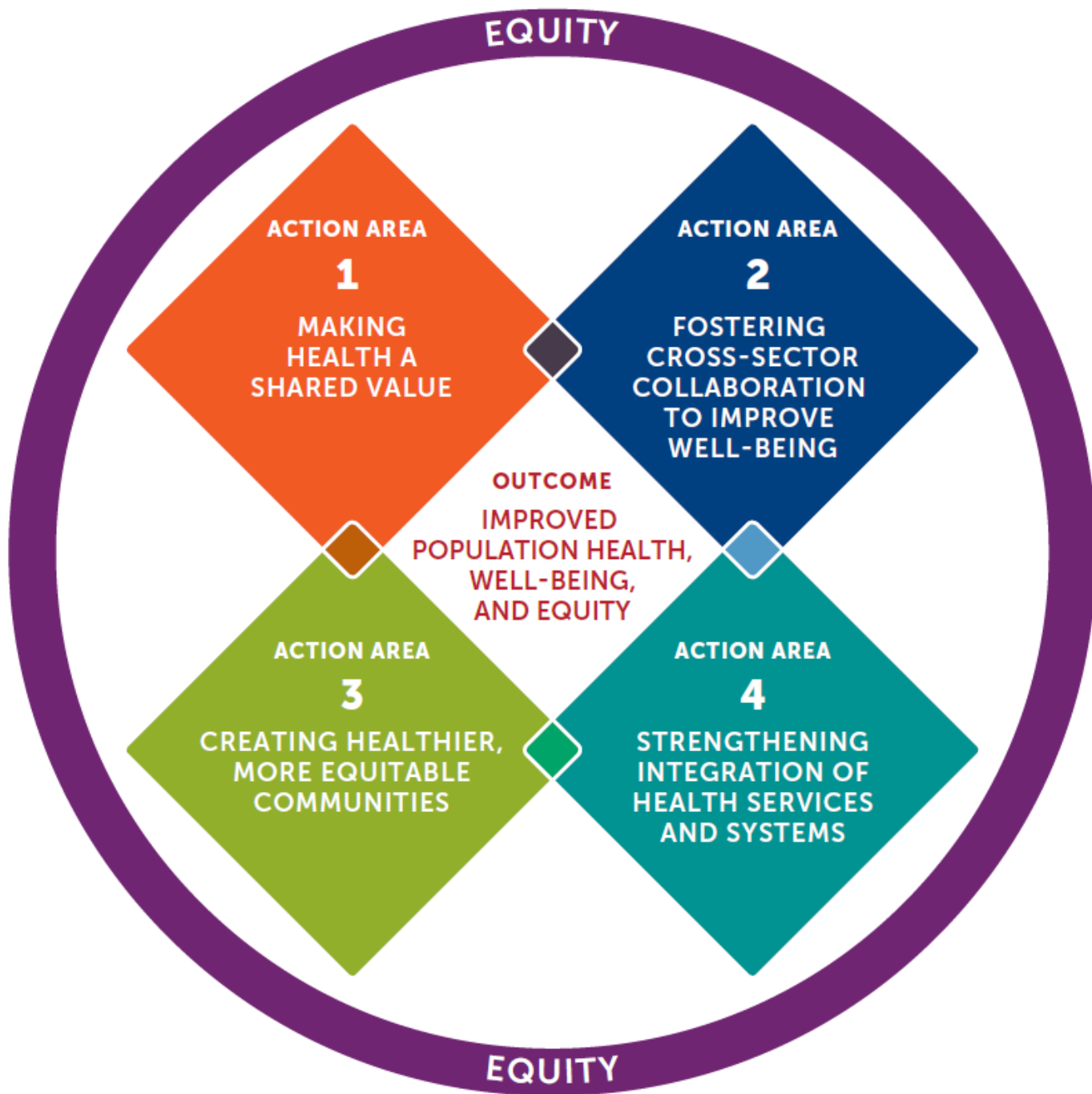
**POPULATION
HEALTH TRUST**
ADVISORY COMMITTEE

Skagit County Board of Health

Lisa Janicki, Chair

Kenneth A. Dahlstedt, Commissioner

Ron Wesen, Commissioner



Review Trust Comments about Framework

- How will this Framework serve our purpose?
- How can this help guide our work?
- How does your organization/service sector fit with this model?
- Can see how one of our Priority Areas could develop under this model?



Drivers

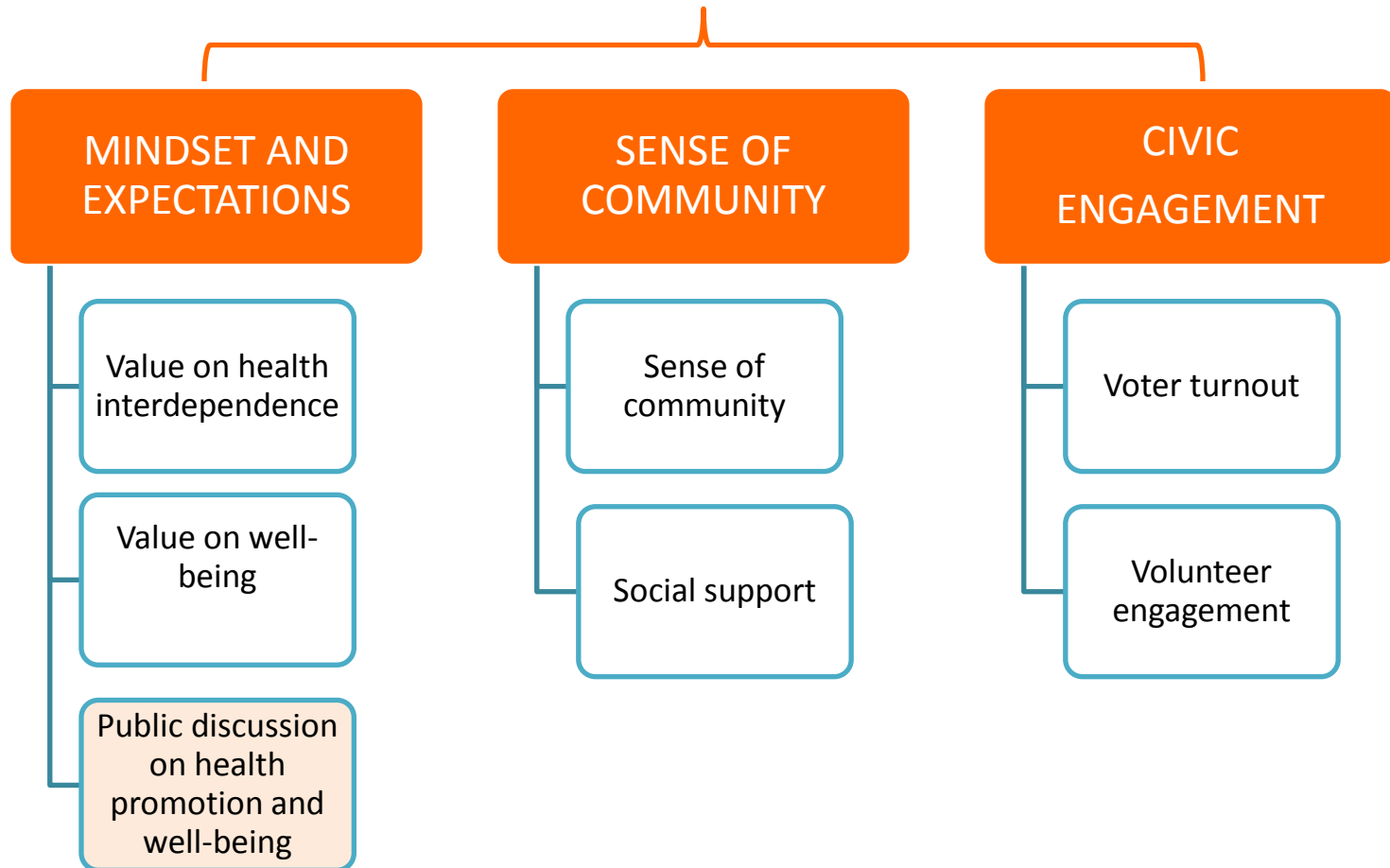


- Focus on where to accelerate change
- Engine of the Framework
- Priorities for investment
- Remain constant over time
- Communities will develop different approaches

1

Making Health a Shared Value

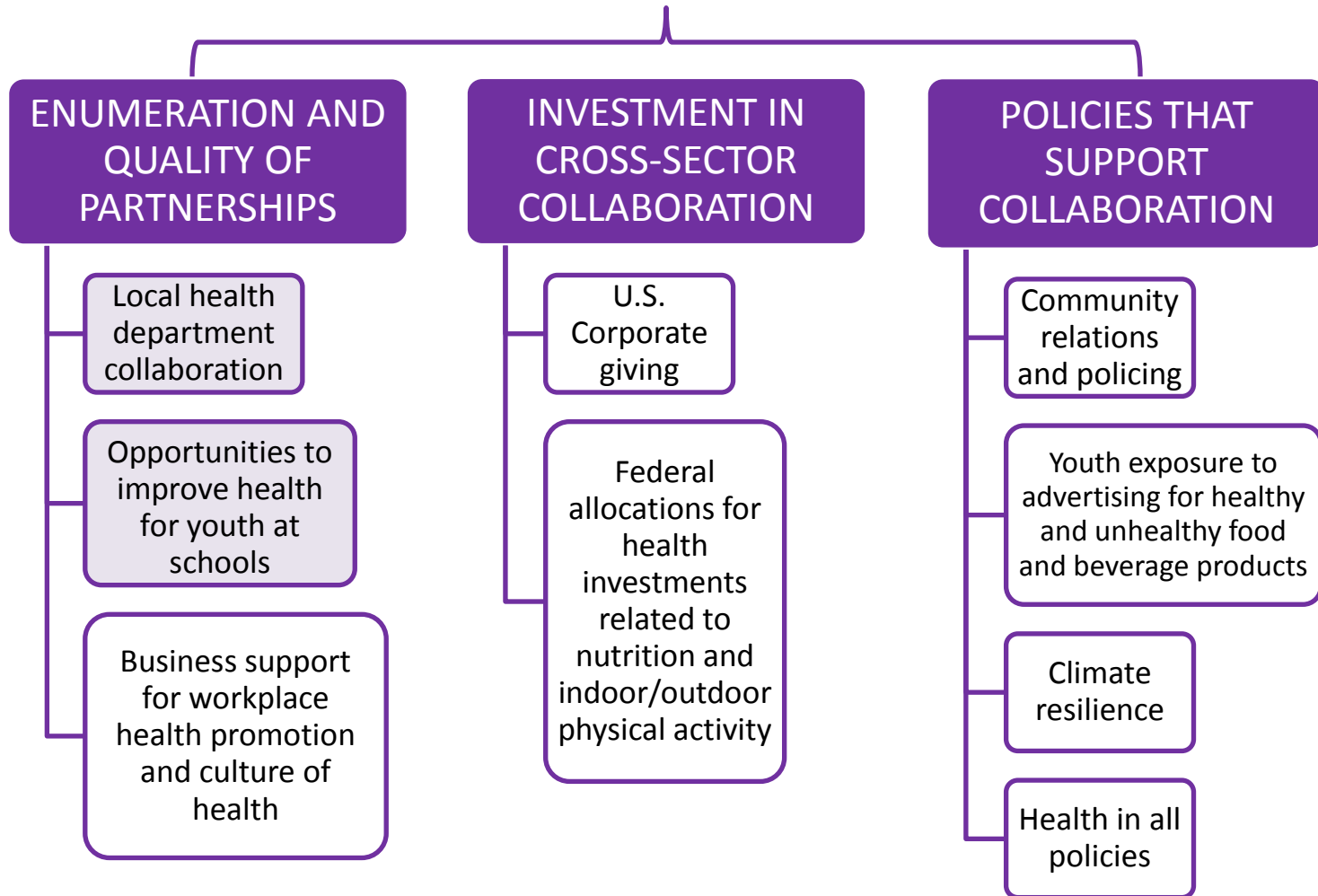
DRIVERS



2

Fostering Cross-sector Collaboration to Improve Well-being

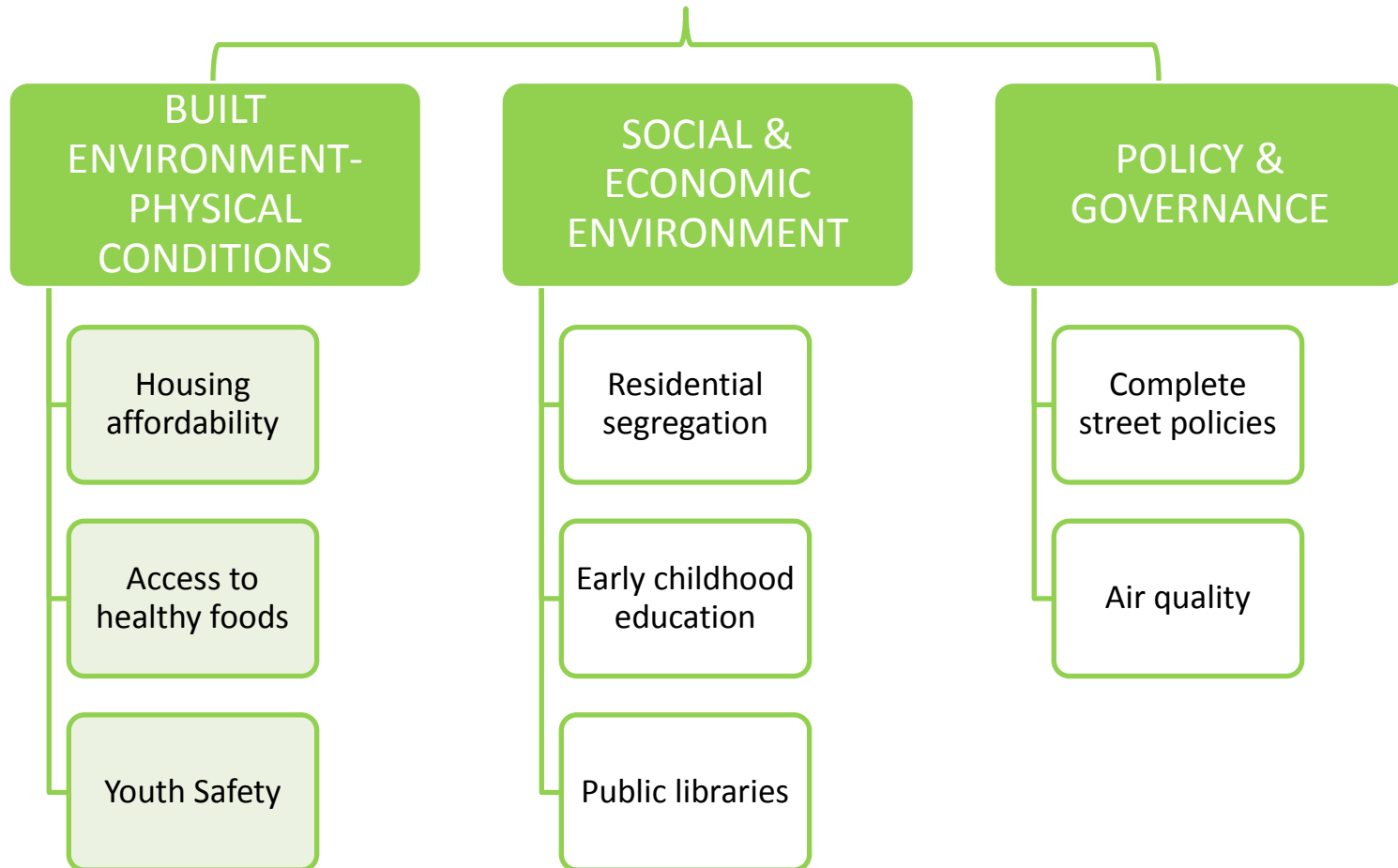
DRIVERS



3

Creating Healthier more Equitable Communities

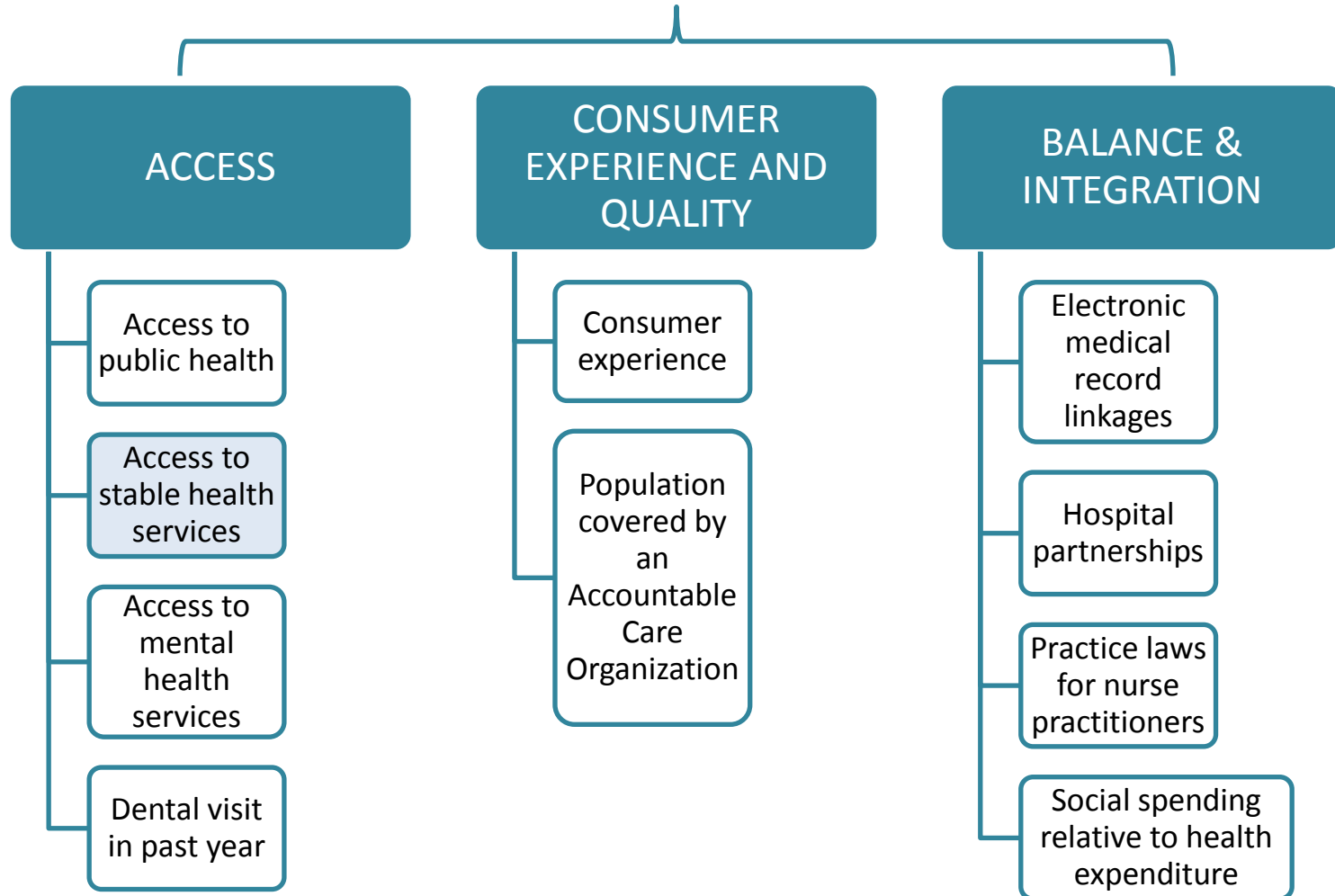
DRIVERS



4

Strengthening Integration of Health Services & Systems

DRIVERS



Pending Strategic Mapping for Skagit County Measures

1

Pending

Options

2

Youth Marijuana Use

Options

2

Youth Depression & Suicide Ideation

Options

2

Living Wage Jobs

Options

3

Access to Healthy Foods

Options

3

Weight Status & Active Living

Options

3

Youth Safety (bullying & violence)

Options

3

Housing & Affordability

Options

4

Access to Health Care (routine & preventative)

Options

4

Chlamydia Rate

Options

4

Immunization & Screening

Options

4

Sufficient Prenatal Care

Options

4

Opioid Problem (Signature Item)

Options

Integration Discussion

Drivers:

**How could we
accelerate and
promote change?**



Skagit County Board of Health - Population Health Trust

"Always working for a safer and healthier Skagit County"

*Lisa Janicki, Chair
Kenneth A. Dahlstedt, Commissioner
Ron Wesen, Commissioner*

Last Items

- Data Dashboard Resource List
- Position Papers
- Closing Remarks

Next Trust Meeting

- EMS Building
- November 3rd, 2016
- Time: 8:30 to 12:00



**POPULATION
HEALTH TRUST**
ADVISORY COMMITTEE

Skagit County Board of Health

Lisa Janicki, Chair

Kenneth A. Dahlstedt, Commissioner

Ron Wesen, Commissioner